



PPH 33D

Procedure Set for
Hemorrhoid and Prolapse

0.8~1.5

0.8 ~ 1.5 mm
Adjustable Staple
Height

32

32 staples



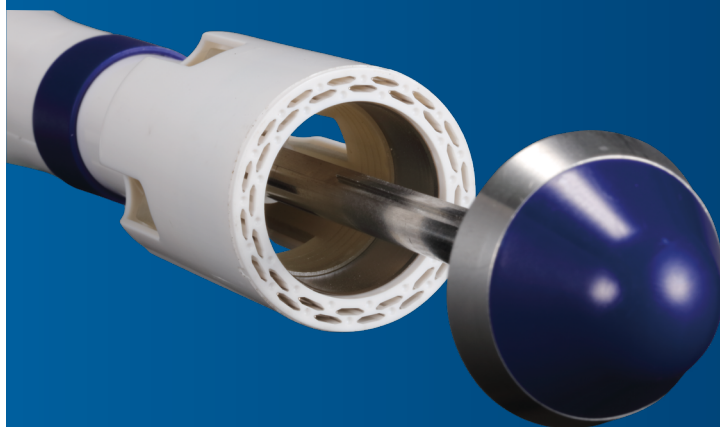
Superior Staple
Formation



Large Housing
Cavity

Product Features

- Adjustable staple height (0.8 ~ 1.5 mm) allows the surgeon to control the level of compression applied to tissue.
- 32 staples ensure better hemostasis and specimen retrieval.
- 4 suture thread ports facilitate easy suture housing
- Fixed anvil reduces risk of accidental detachments
- Larger housing cavity accommodates more issues
- 63 mm length central rod provides clearer sight and better view



Product Specification

Product Code	Cutting Area Diameter	Open Staple Height	Closed Staple Height	Number of staples	Number of staple rows	QTY/ BOX
PPH 33D	24.4 mm	3.5 mm	0.8 ~ 1.5 mm	32	2	3

Contacts

Global Headquarter
120 Xinxing Road
West Zone, TEDA
300462 Tianjin
China

T +86-22-25326259
F +86-22-66200915

Importer



Distributor

